

# **ECCO**

## **HIGH FREQUENCY CORPORATION**

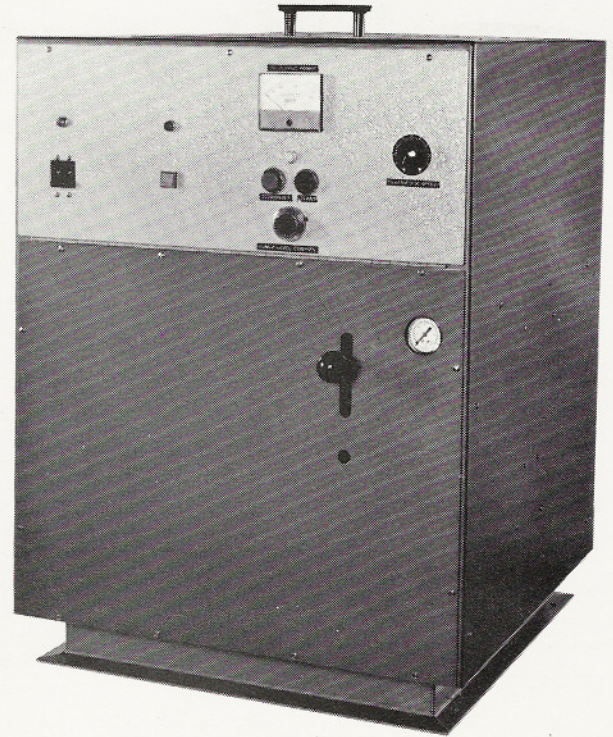
GlowTester Tech, Inc.  
 2360 Hamburg Turnpike  
 Wayne, NJ 07470  
 973-248-3388  
 GlowTesterTechnologies.com

### **DCM SERIES - DENTAL CASTING MACHINES**

ECCO's DCM - Induction Dental Casting Machines are brought to you by the pioneer in the field of Dental Casting. We put over 5 decades of experience behind every unit. There are models for every budget and requirement, from the growing lab to the largest production laboratory. These units represent the state of the art in Induction Dental Casting.

#### **FEATURES:**

- 100% Solid State Power Supply
- High Efficiency
- Capable of Melting and Casting All Dental Alloys
- Compact Size
- Safety Interlocks for Centrifuge, Water Pressure and cover
- Variable casting arm speed
- Modular Design
- Overload protection
- Made With Pride in the United States



#### **MODEL SPECIFICATIONS:**

	<b><u>DCM I</u></b>	<b><u>DCM II</u></b>	<b><u>DCM III</u></b>
Height	40"	40"	40"
Width	27"	27"	27"
Depth	27"	27"	27"
Weight (approx.)	200 #	200 #	200 #
Output Power	4.4KW @150kHz	4.4KW @150kHz	4.4KW @150kHz
Input	190-250VAC/30Amps	190-250VAC/30Amps	190-250VAC/30Amps
Vacuum Capability	Yes	No	No
Optical Pyrometer	Yes	Yes	No
Temperature Controller	Yes	Yes	No
Soak Timer	Yes	Yes	No
Digital Display	Yes	Yes	No